

4 Port Full Gigabit Managed Industrial PoE Switch

2* GE PoE+2*GF Managed Industrial PoE Switch



- Managed 2*10/100/1000M+2*1000M SFP fiber Port Industrial PoE Switch,1-2port support IEEE 802.3af/at;
- PoE port support AF/AT intelligent recognition, Standard power is 15.4W/port, Maximum power: 30W/port;
- Only support 1,2(+)/3,6(-);
- Support L2+ full network management,PoE network management and configuration;
- Switching capacity: 128Gbps,MAC table: 8K;
- Input voltage:DC48-57V,Redundant dual power 5-bit industrial terminals;
- IP protection level: IP40;Rail-type installation.
- 5 years warranty

RoHS **FC** **CE**

Introduction

The SE-PIS3804M-2GE is a full Gigabit managed industrial PoE switch. It has 2*10/100/1000M PoE ports+2*100/1000M SFP fiber slot ports, port 1-2 supports IEEE 802.3af/at standard POE power supply, single port POE power up to 30W, the maximum PoE output power is 36W (at-60W). As a POE power supply device, it can automatically detect and identify the electrical equipment that meets the standard and supply power through the cable. It can supply the POE terminal equipment, such as wireless AP, network camera, network telephone, industrial sensor and so on, to meet the demand for high density PoE power supply network environment. It is suitable for intelligent transportation, rail transportation, electric power industry, mining, metallurgy and green energy construction and so on. A reliable communication network.

The managed model supports multiple network redundancy protocols STP/RSTP/MSTP (<50ms). When a one-way network fails, communication can be quickly resumed to ensure uninterrupted communication of important applications. SE-PIS3804M-2GE industrial series products fully comply with industrial product design and materials. The shell is made of aluminum alloy to enhance heat dissipation performance and IP40 protection level to ensure stable operation of equipment under harsh environment. You can configure PoE power management, port traffic control, VLAN division, STP, and RSTP for multiple application services based on the Web, CLI, and SNMP network management.

TECHNICAL SPECIFICATION

Model	SE-PIS3804M-2GE
Interface	2*10/100/1000M POE ports(Data); 2*100/1000M SFP fiber solt ports(Data) 1 * RS232 console port(115200,N,8,1) 2 groups V+, V- redundant DC power interface (5P phoenix terminal)
PoE Port	Port 1-2 supports POE @ IEEE802.3af/at
Network Protocol	IEEE802.3 10BASE-T; IEEE802.3i 10Base-T; IEEE802.3u 100Base-TX/FX; IEEE802.3ab 1000Base-TX IEEE802.3z 1000Base-FX IEEE802.3x
PoE Standard	IEEE802.3af/at
Ethernet Port Feature	Port 1-2 supports 10/100/1000BaseT (X) automatic detection, full / half duplex MDI/MDI-X adaptive
SFP Port Characteristic	Gigabit SFP optical fiber interface, default matching optical modules, need to buy separately, (optional order mode / multi-mode, single fiber / double fiber optical module.
Forwarding Mode	Store and Forward(Full Wire Speed)
Switching Capacity	128Gbps
Forwarding Rate@64byte	8.93Mpps
MAC	8K
Buffer Memory	4M
Twisted Pair Transmission	10BASE-T: Cat3,4,5 UTP(≤ 100 meter) 100BASE-TX: Cat5 or later UTP(≤ 100 meter) 1000BASE-T: Cat5 or later UTP(≤ 100 meter)

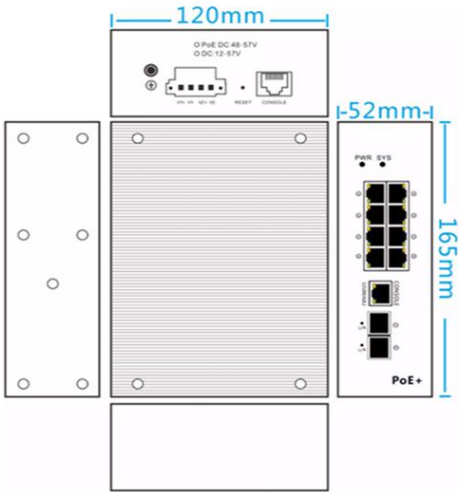
Optical Cable	Multi mode: 850nm 0 ~ 550M, single mode: 1310nm 0 ~ 40KM, 1550nm 0 ~ 120KM.
Power Supply Pin	Default 1/2 (+), 3/6 (-), 4-core power supply
Max / Average Power Per Port	30W/15.4W
Total PWR / Input Voltage	36W (48-57VDC)
Power Consumption	Standby:<4W;Full load:<30W
LED	Power Indicator : PWR (Green);system indicator:SYS(Green);Network Indicator: Link/Act (Yellow);SFP Indicator: L/F (Green); PoE Indicator: PoE (Green)
Power Supply	No, you can purchase industrial power supply 48V/36W@af or 48V/60W@at
Operation TEMP / Humidity	-40~+80°C;5%~90% RH Non condensing
Storage TEMP / Humidity	-40~+85°C;5%~95% RH Non condensing
Dimension	145*134.5*47.5mm
Net /Gross Weight	<0.7kg / <1.0kg
Lightning protection / protection level	<p>Lightning protection: 4KV 8/20us;Protection level: IP40</p> <p>IEC61000-4-2(ESD):±8kV contact discharge,±15kV air discharge</p> <p>IEC61000-4-3(RS):10V/m(80~1000MHz)</p> <p>IEC61000-4-4(EFT): power cable:±4kV; data cable:±2kV</p> <p>IEC61000-4-5(Surge):power cable:CM±4kV/DM±2kV; data cable:±4kV</p> <p>IEC61000-4-6(radio frequency transmission):10V(150kHz~80MHz)</p> <p>IEC61000-4-8(power frequency magnetic field):100A/m;1000A/m ,1s to 3s</p> <p>IEC61000-4-9(pulsed magnet field):1000A/m</p> <p>IEC61000-4-10(damped oscillation):30A/m 1MHz</p> <p>IEC61000-4-12/18(shockwave):CM 2.5kV,DM 1kV</p> <p>IEC61000-4-16(common-mode transmission):30V; 300V,1s</p> <p>FCC Part 15/CISPR22(EN55022):Class A</p> <p>IEC61000-6-2(Common Industrial Standard)</p>
Mechanical Properties	<p>IEC60068-2-6 (anti vibration)</p> <p>IEC60068-2-27 (anti shock)</p> <p>IEC60068-2-32 (free fall)</p>

Certification	3C;CE mark, commercial; CE/LVD EN60950;FCC Part 15 Class B; ROHS;
Warranty	2 years for industrial PoE switch , lifelong maintenance.
Business features (only restricted management function models)	
Port	Support IEEE802.3x flow control (full duplex) Support for broadcast storm suppression based on port rate support speed limit for incoming and offline message traffic, with a minimum particle size of 64Kbps. Support port temperature protection settings Support port EEE green Ethernet energy saving configuration
PoE Management	Support total power limit configuration for POE power supply Support PoE output power allocation per port, close / start af/at Support PoE output priority configuration per port Support PoE work status per port display Support power delay start Support PoE work and time scheduling
Layer3 Function	Support L2+ three-layer soft routing (weak three-layer) forwarding, non-linear speed Support static routing / default routing 128, 1024 ARP software forwarding
VLAN	Support port based VLAN (4K), IEEE802.1q Support protocol based VLAN Support Access, Trunk, Hybrid three types of port configuration Support QinQ configuration
Port Aggregation	Support LACP Support static polymerization Support the largest 8 aggregation groups, each aggregation group supports 8 ports.
Spanning Tree	Support STP(IEEE802.1d) Support STPRSTP (IEEE802.1w) Support STP MSTP (IEEE802.1s)

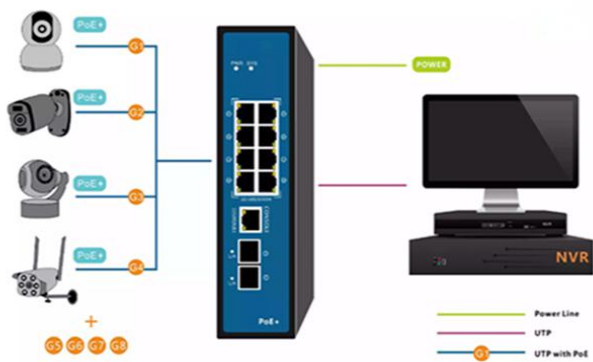
Industrial Ring Network Protocol	Support G.8032 (ERPS), support 255 loops at most, and supports 1024 devices per ring. The self healing time of the ring network is less than 20ms
Multicast	Support IGMP Snooping V1/V2 and support 1024 multicast groups at most. Support the user's quick departure mechanism Support MLD Snooping V1/V2 Support multicast VLAN
Mirror	Bi-directional traffic mirroring supporting the basic port
QoS	Support Diff-Serv QoS Each port supports 8 output queues Support 802.1p/DSCP priority mapping Support queue scheduling mechanism (SP, WRR, SP+WRR) Support priority tag Mark/Remark Support stream based packet filtering Support for stream based redirection Support flow based speed limit
ACL	Support L2 to L4 packet filtering function, can match the first 80 bytes of the message, provide based on the source MAC address, destination MAC address, source IP address, destination IP address, IP protocol type, TCP/UDP port, TCP/UDP port range, VLAN and other definition ACL. Support ACL based on port and VLAN
Safety Characteristics	Support user grading management and password protection Support IEEE802.1X authentication / centralized MAC address authentication Support AAA&RADIUS authentication Support the number of MAC address learning restrictions Support MAC address black hole Support SSH 2 to provide secure passwords for user login. Support SSL to ensure data transmission security Support port isolation Support the speed limit function of ARP message Support IP source address protection Support ARP intrusion detection function Support against DoS attacks

	Support port broadcast message suppression Support host data backup mechanism Binding capabilities of IP+MAC+VLAN+ ports
DHCP	Support DHCP Client Support DHCP Snooping
Management Maintenance	And Support Console/AUX Modem/Telnet/SSH2.0 CLI command line configuration Support WEB network management (support for HTTPS) Support FTP, TFTP, Xmodem, SFTP file download management Support SNMP V1/V2C/V3 Support one bond reduction Support NTP clock Support system work log Support the English command line to help information Support Ping detection Support cable state detection Support CPU instant utilization status view Support link layer discovery protocol LLDP NMS cluster management supporting service (LLDP+SNMP)
System Requirements	Web browser: Mozilla Firefox 2.5 or higher, Google browser chrome V42 or higher, Microsoft Internet Explorer10 or later; 5 types and above Ethernet cable; TCP/ IP, network adapter and network operating system (such as Microsoft Windows, Linux or Mac OS X) are installed on computers in the network.

DIMENSION



APPLICATION



PACKING LIST

	CONTENT	QTY	UNIT
PACKING LIST	4-port full gigabit managed industrial PoE switch (SE-PIS3804M-2GE)	1	SET
	User Guide	1	PC
	Warranty Card	1	PC